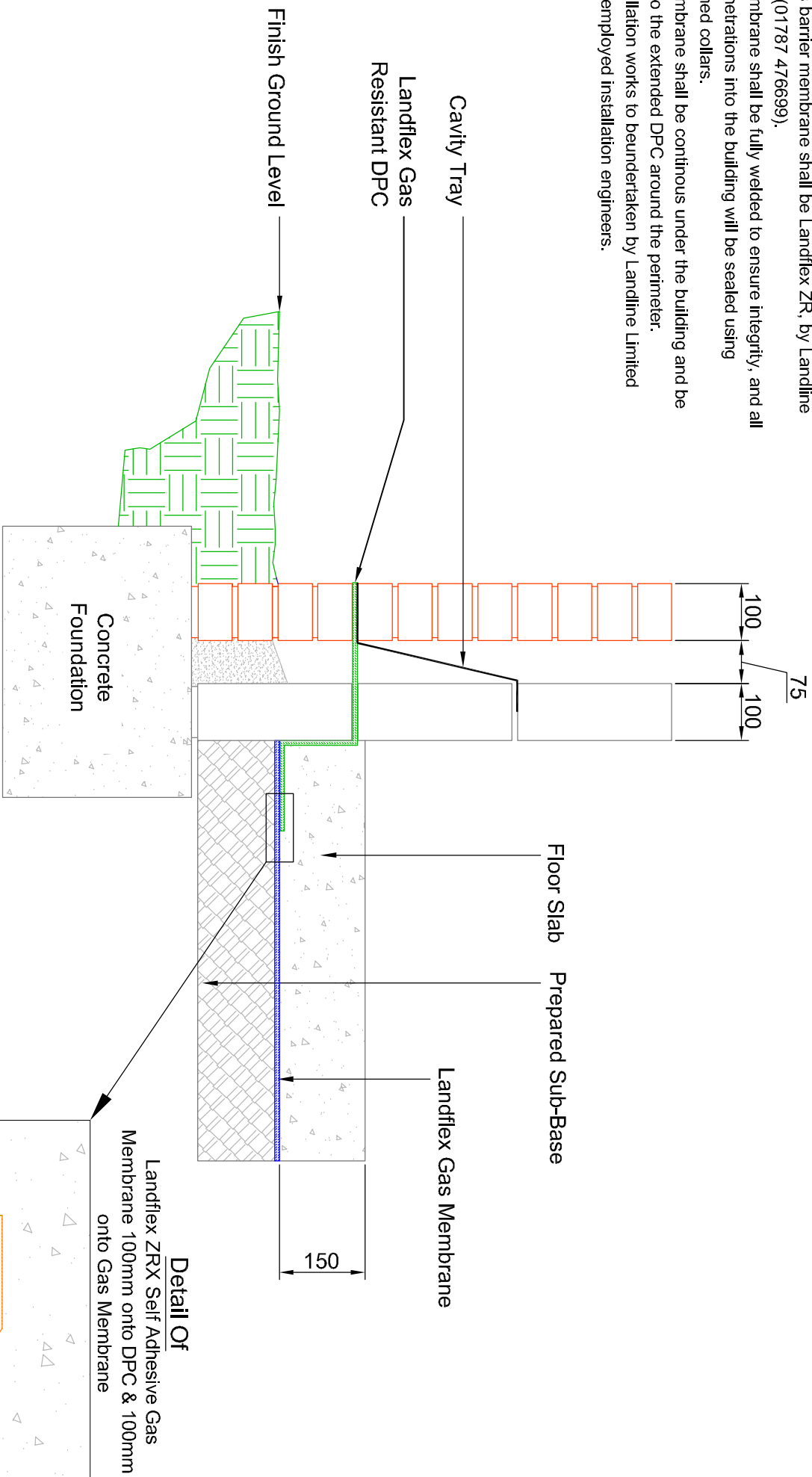


Notes:-

The gas barrier membrane shall be Landflex ZR, by Landline Limited (01787 476699).
 The membrane shall be fully welded to ensure integrity, and all pipe penetrations into the building will be sealed using pre-formed collars.
 The membrane shall be continuous under the building and be sealed to the extended DPC around the perimeter.
 All installation works to be undertaken by Landline Limited directly employed installation engineers.



All dimensions in millimeters unless stated otherwise



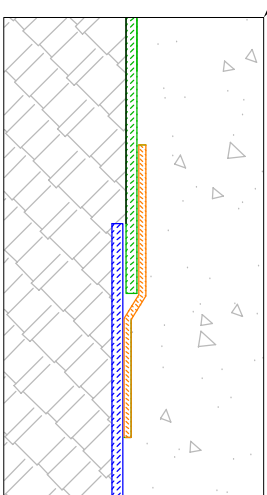
CONTAINMENT SOLUTIONS

1 Bluebridge Ind. Est, Halstead, Essex CO9 2EX
 Tel: (01787) 476699 Fax: (01787) 472507
 e-mail: sales@landline.co.uk www.landline.co.uk

Typical Detail

Standard DPC Sealing Detail

(Landflex ZR)



Detail Of
 Landflex ZRX Self Adhesive Gas Membrane 100mm onto DPC & 100mm onto Gas Membrane

Drawn	Checked	Approved	Date	Scale
S. Blackwell	S. Quill	B. Ackroyd	3rd June 08	NTS
Drawing No. COA 01 DPC				Revision

				297x210mm A4